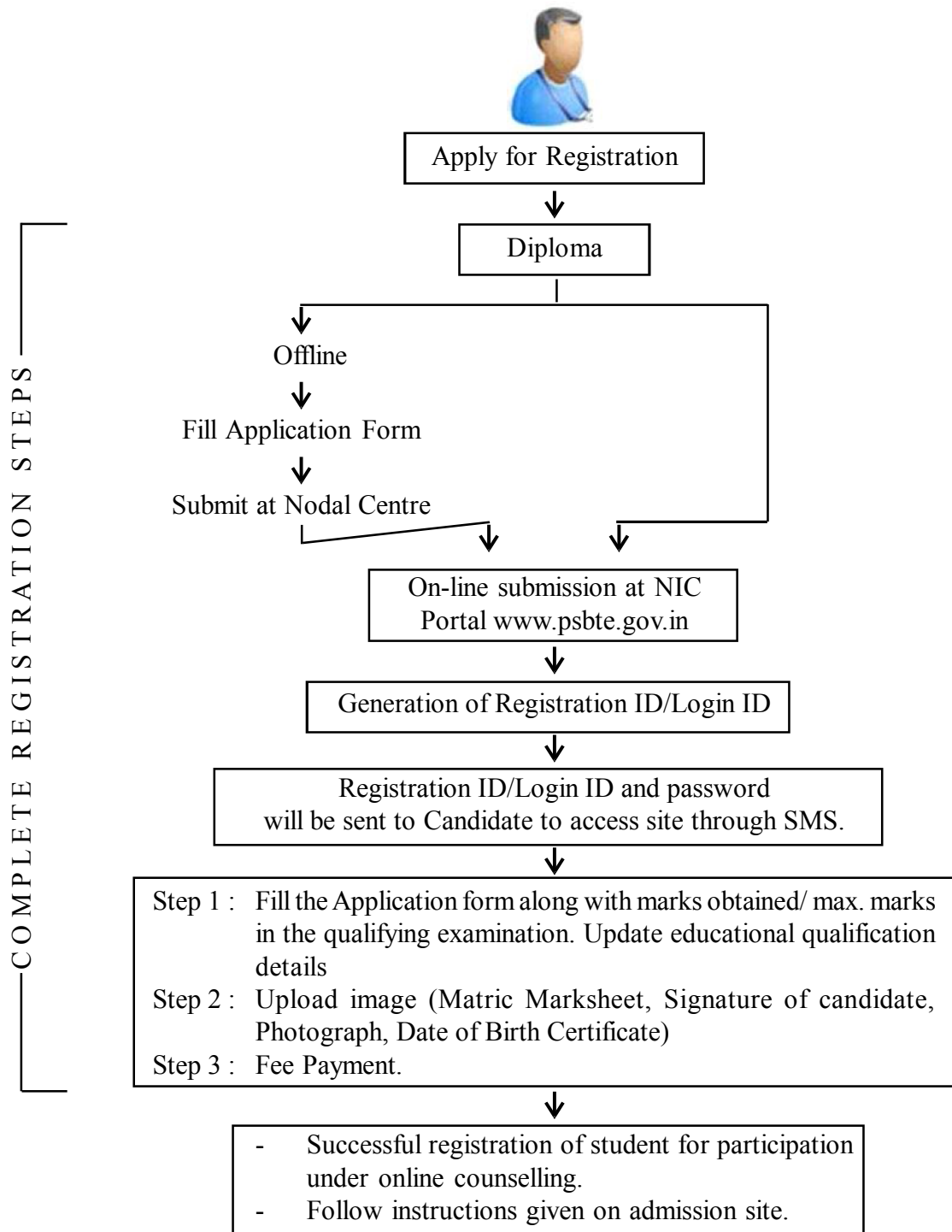


# FLOW CHART FOR REGISTRATION FOR PARTICIPATION IN ONLINE COUNSELING



## INSTRUCTIONS FOR FILLING APPLICATION FORM :

- Incomplete or wrongly filled Admission form is liable to be rejected.
- Candidates are advised to keep a photocopy of this Application form for any further enquiry.
- Application form without valid mobile number is liable to be rejected. It is must to fill mobile number as information related to user name/Password to access admission site will be sent to the mobile number mentioned on this application form so that candidate can update education qualification details, upload image (Matric Marksheet, Signature of candidate, Photograph, Date of Birth Certificate). Make fee payment for the complete submission of this application form on admission website and participate in online counseling procedure as given on website.
- For latest information, please visit Board's websites : [www.punjabteched.net](http://www.punjabteched.net) and [www.punjabteched.com](http://www.punjabteched.com)